

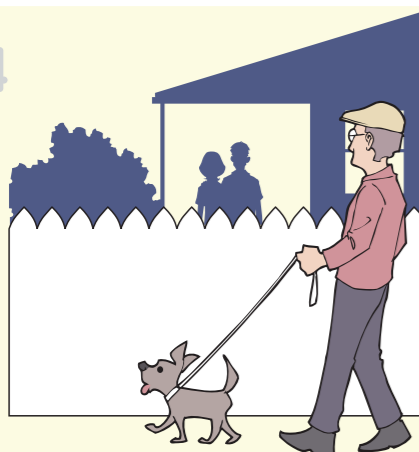
13



If you see family violence:

Call 000 for immediate police assistance

14



- **Police Non Urgent Assistance**  
- Policelink 131444
- **Translating & Interpreting Service (TIS) (24hrs)** - 131450 If you require an interpreter phone TIS and ask to be connected to one of the services above.
- **Hearing Impairment National Relay Service**  
- 106 (Emergency)  
- 0437 131 444 (Non-urgent Policelink SMS)
- **National Relay Service** - 133 677
- **Women's Domestic Violence Crisis Service** - 9322 3555 or 1800 015 188 (24 hour help)
- **Parentline** - 132 289
- **Kids Helpline** - 1800 55 1800
- **Lifeline** - 131 114
- **Centrelink** - 131 794



[nhwa.com.au](http://nhwa.com.au)

Behind closed doors:

Family violence is a community issue



How to get help



An Australian Government Initiative



[nhwa.com.au](http://nhwa.com.au)

